



Station Road, West Drayton, UB7 7FA

- Two Bedroom Apartment
- No Chain
- Secure Undercroft Parking
- 665 Sq Ft
- Two Bathrooms
- Communal Roof Terrace
- Secure Bike Storage
- Close To West Drayton Station

Asking Price £295,000

Description

Complete is delighted to market this stylish two-bedroom apartment set on the 2nd floor of a sought-after modern block, just minutes away from West Drayton station. Currently tenanted until 21st October, then available with vacant possession

Accommodation

The apartment offers ample and cleverly designed living space including a 24ft L-Shaped living/dining room with open plan integrated kitchen, a master bedroom with a modern en-suite shower room, a second substantial bedroom and a contemporary family bathroom. The new owners will benefit from under croft parking and access to communal roof gardens.

Outside

There is a private residents garden and large roof terrace

Situation

Situated a short walk from a plethora of local shops and West Drayton Railway Station, residents will be able to get to London Paddington station in 23 minutes or Reading in 36 minutes. Travel times into the capital, London Heathrow Airport, and Reading will be reduced with the arrival of Crossrail, which is now estimated to be by 2022.

Terms and notification of sale

Tenure: Leasehold

Local Authority: London Borough of Hillingdon

Council Tax: C

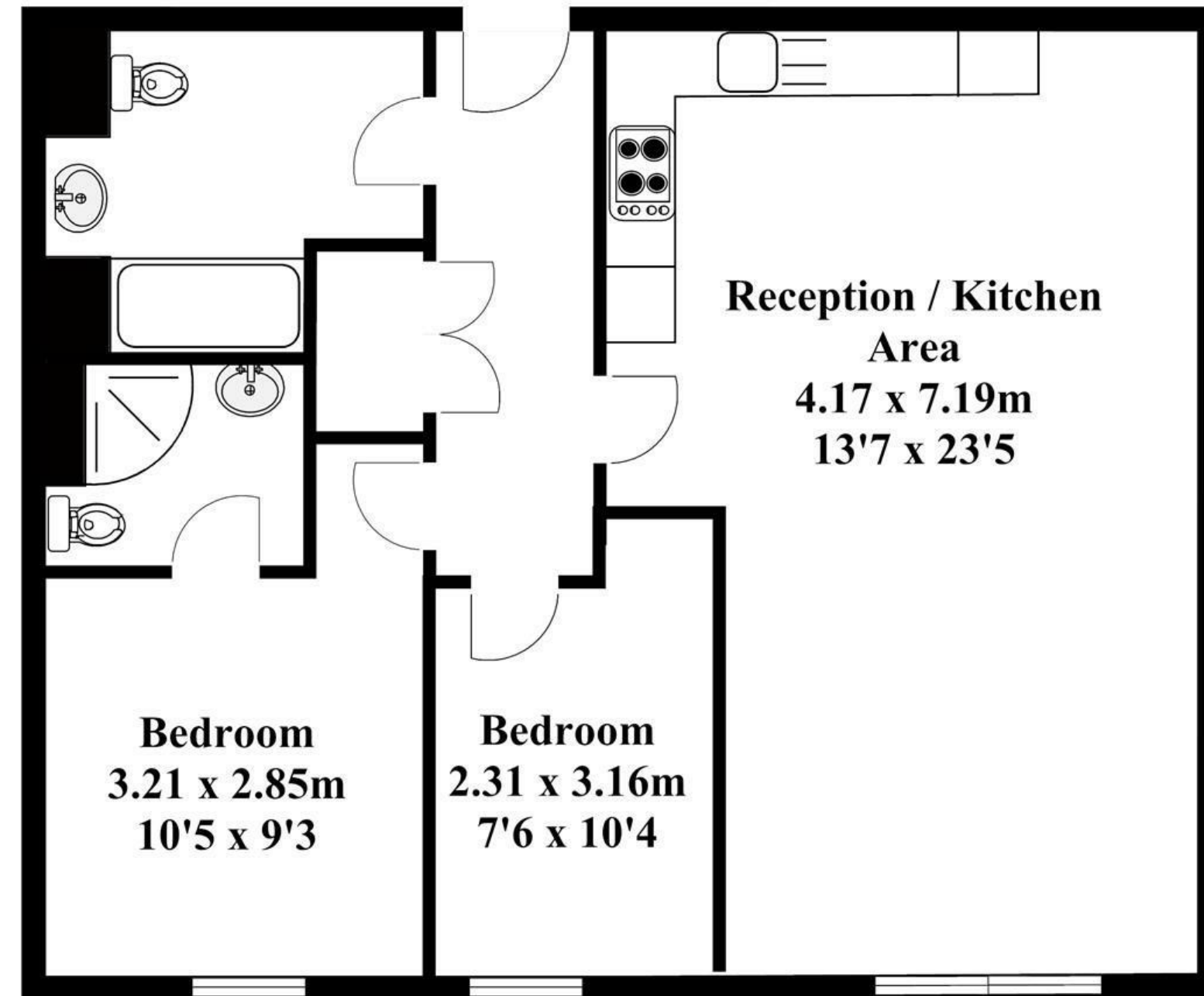
EPC Rating: C

Service Charge: £2,430 pa/est

Ground Rent: £300 pa/est

Lease: 125 years from 2012

Approx. Gross Internal Area = 62m square = (665ft square)



Plan produced by HP. Source.
For illustrative purposes only.
Not to scale.
Tel-07766340073



2nd Floor

IMPORTANT NOTICE

These particulars have been prepared upon information supplied by the Vendor and should be verified by your surveyors and solicitors. We have prepared these sales particulars as a general guide to give a broad description of the property. They are not intended to constitute part of an offer or contract. We have not carried out a structural survey and the services, appliances and specific fittings have not been tested. All photographs, measurements, floor plans and distances referred to are given as a guide only and should not be relied upon for the purchase of carpets or any other fixtures or fittings. Lease details service charge and ground rent (where applicable) are given as a guide only and should be checked and confirmed by your solicitor prior to exchange of contracts